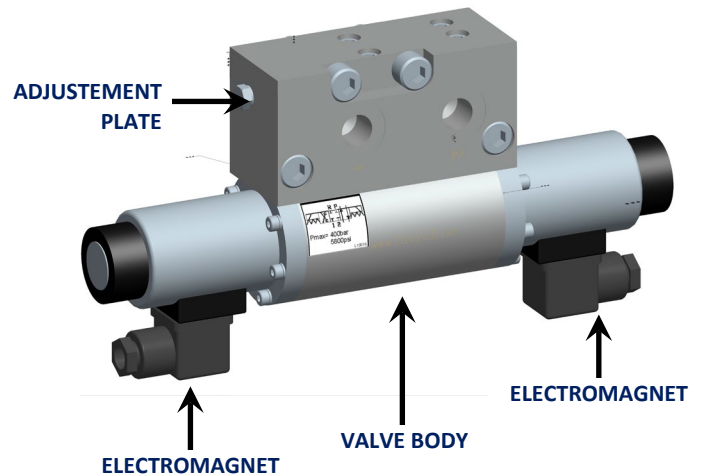


ELECTROMAGNETIC VALVE 4/2 SUMO AND MINI-SUMO

The Modular Directional Valve has been designed to control supply lubricant in dual line systems. This valve is able to operate with MAX NLGI 2 grease, with 400 bar max pressure (5880 psi).

A lubrication cycle is completed when both the principal lines alternatively pressurize and depressurize.

Solenoid controls (S1 or S2) must be "pulse" (pulse duration = 5 seconds).



WIRING PIN OUT CONNECTORS

Adjustment plate for SUMO and Mini-SUMO Dropsa pumps

APPLICATIONS

- **Dual line system:** for inversion of Dual line systems.
- **Progressive and zoned systems:** by plugging port 1 or 2 the valve can be used for zone complex circuits.
- **Grease applications:** particularly suited for grease, it can be applied to any circuit requiring a 4/2 valve.

ADVANTAGES

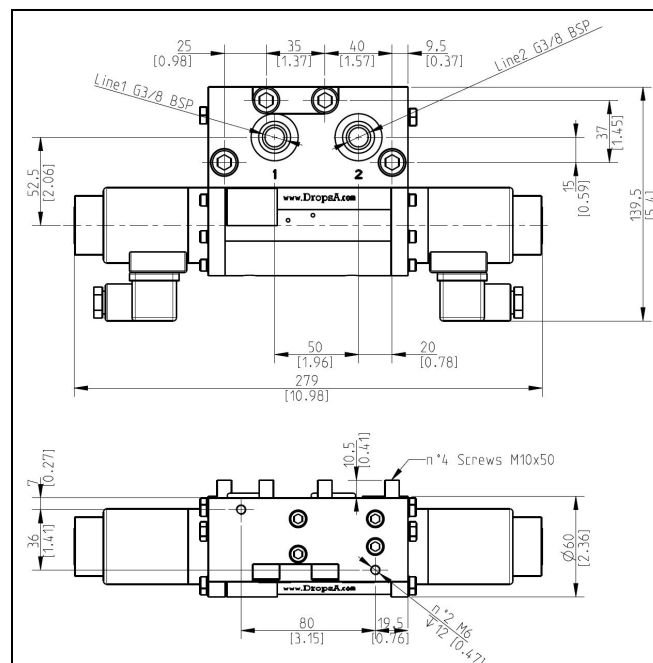
- **Modular base:** means fast maintenance, minimum downtime and less contamination
- **Electromagnet operation:** no air required.



TECHNICAL INFORMATION

TECHNICAL INFORMATION	
Voltage	24V CC
Power consumption	105W
Coil power consumption	4,4A
Coil protection degree	IP 65
Max flow rate	400 cc/min
Max working pressure	5880psi (400 bar)
Outlet connection	G3/8" BSP
Temperature of use	23° ÷ +122° F (-5 ÷ + 50 °C)
Maximum time of continuous working (T-on)	1 min 30 sec
minimum Standby time	4 times T- on
Operating humidity	90 % humidity rel.
Lubricants	Grease max NLGI2
Storage temperature	- 4 ÷ 32 °F (-20 ÷ +65 °C)

DIMENSIONS



ORDERING INFORMATION

DESCRIPTION	Part No.	
Directional valve 4/2 24V DC	0083560	
OPTIONAL	DESCRIPTION	Part No.
	Pressure gauges Kit (Fittings + Pressure gauges)	3133910
SPARE PARTS	DESCRIPTION	Part No.
	Electromagnet 24V DC	3150017
	Electric connector	0039976
	Valve/pump OR gaskets (2 for each direction valve)	3190500
	Right pressure gauge	3292172
	Left pressure gauge	3292171

Info Distributor: