

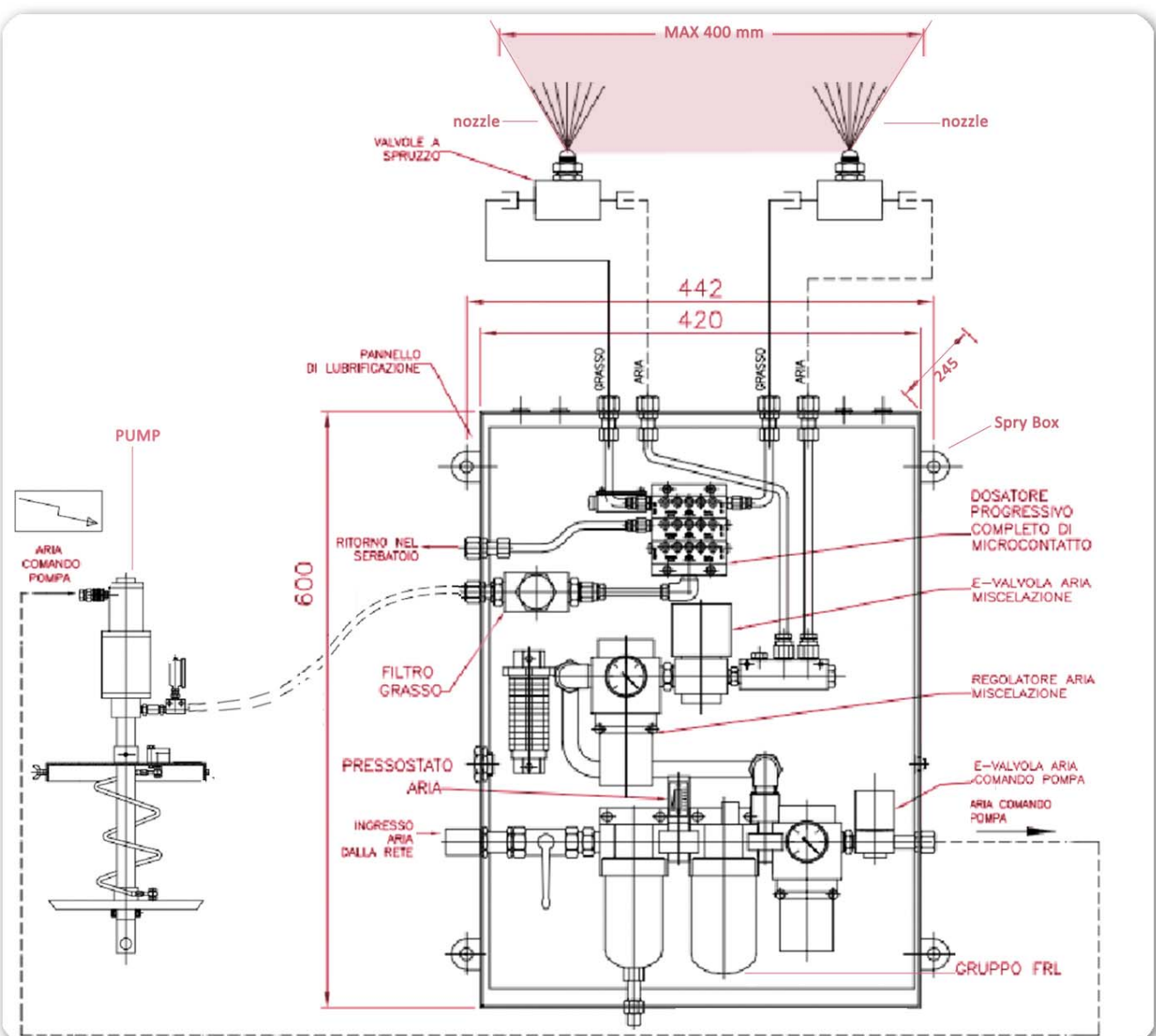
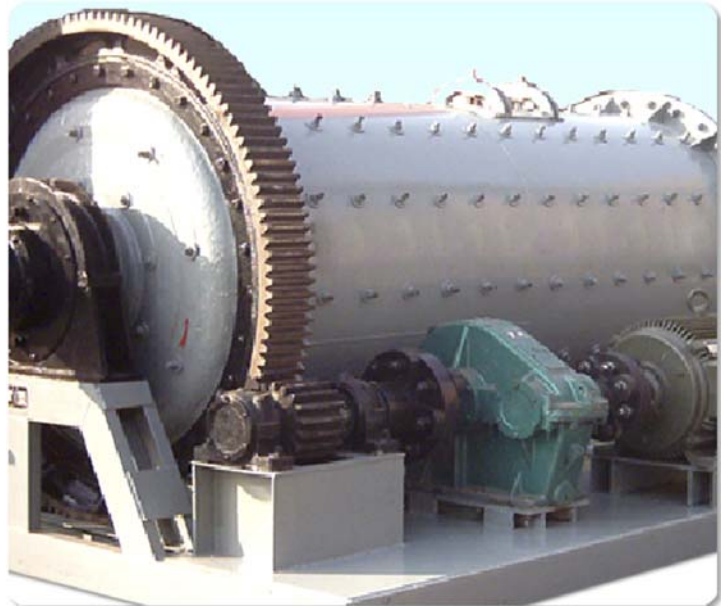
The cement mills are subjected to the wear mainly on the external gear or where the motor matches the main cement gear cylinder.

The open gear is subjected to the high power and the dust environment. This two factor can decrease the lifetime of powered pinion.

To solve this premature wear Dropsa studied a lubrication system.

The grease is sprayed by 2 or more nozzles that guarantees the width cover of the gear.

The grease is sprayed uniformly on the teeth and protect the surface.



DropsA proposed:

▪ Drum Pump

The pneumatic grease pump is an assembly consisting of a cam pneumatic motor connected to a piston-pump located at the bottom of the suction unit.

- Handles Grease NLGI 2 for extreme pressure

▪ SMX

DropsA dual line divider allows to maintain a correct distribution of grease on each point.

They are suitable for Atex and harsh Environment in fact they are certified and made in SS316

▪ Flat Nozzles

Valve for internal mixing, suitable for gear pinion applications where it is required the distribution of grease on parts in contact. The peculiar shape of mixing nozzle directs the lubricant only on parts in contact, avoiding, in this way, lubricant leakage and reducing the consumption.



Drum pump



Flat nozzles



Smx

Progressive divider