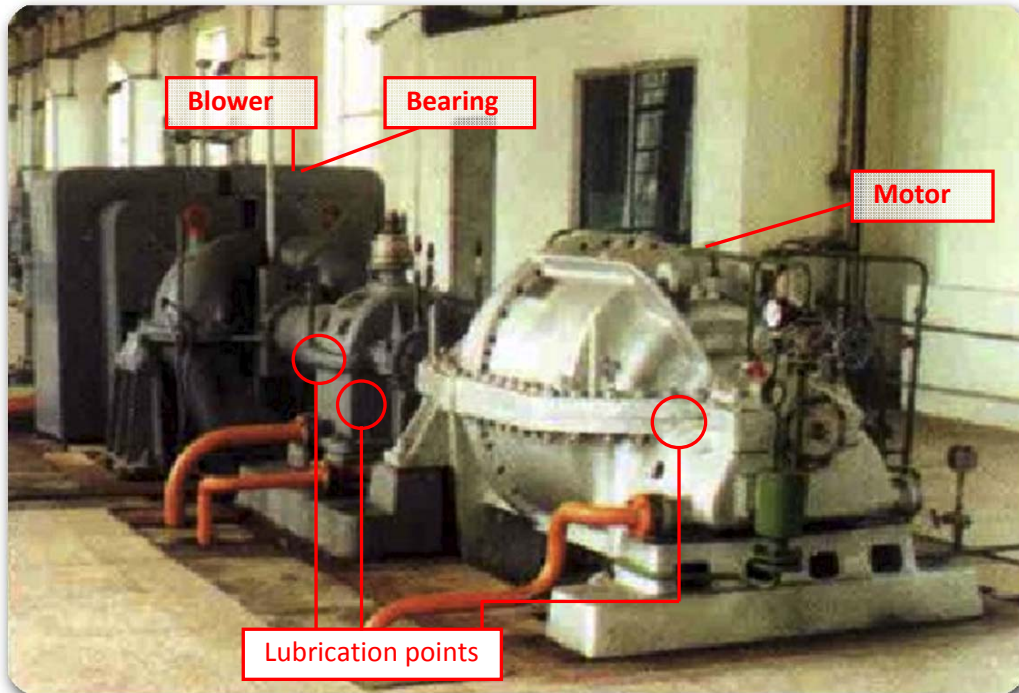


DropsA also supplies lubrication systems for Blowers which can be found in various industries. Each unit has to be custom designed for the customer depending on their requirements.



The diagram on the right represents a common lubrication arrangement for a blower.

Typically the parts that need to be lubricated are the motor bearing and the bearing housing that connects the motor to the fan.

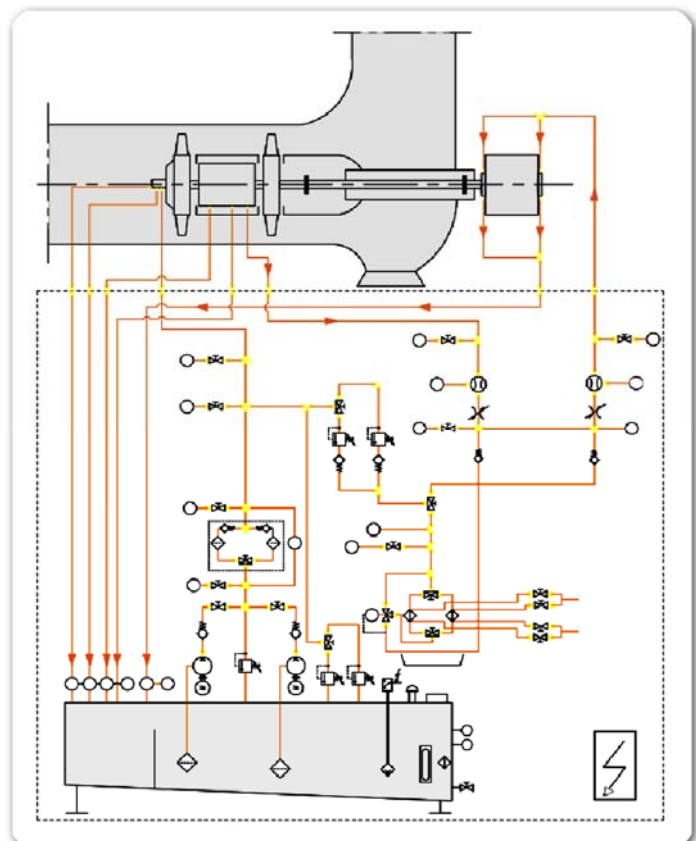
These systems can also be subjected to API or ATEX standards.

Analysis of the lubrication system

It is common to use Oil recirculation systems.

The oil is pump through the bearings and then recirculated. DropsA assists with all necessary design calculations such as tank dimensions, instrumentation required, flow calculations, pressure calculations, cooling and heating requirements and much more.

This enables us to offer turnkey solutions.



DropsA proposed:

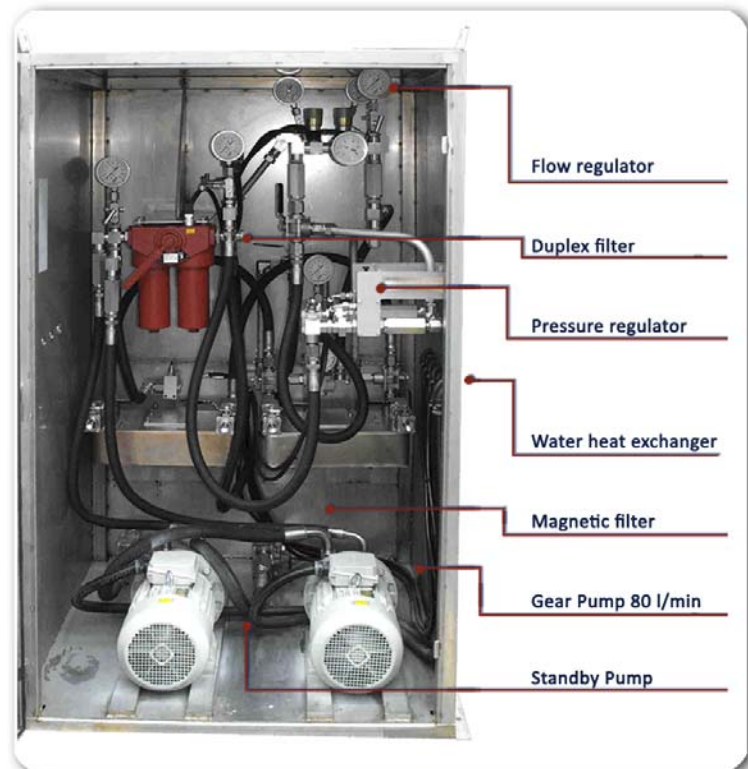
▪ Lubrication Unit

Each power plant need to be lubricated ad hoc and every blower is studied according the customer specifications.

Normally the unit is composed form one reservoir and its heater.

Internally, inside the cabinet there are included pumps, heat exchangers, duplex filter, flow regulator and pressure regulator.

The picture to the right represents one of the units made in a SS enclosed cabinet with two pumps with 80 liters per minute flowrate.



Below is an example of an API Unit for a Fertiliser Plant

