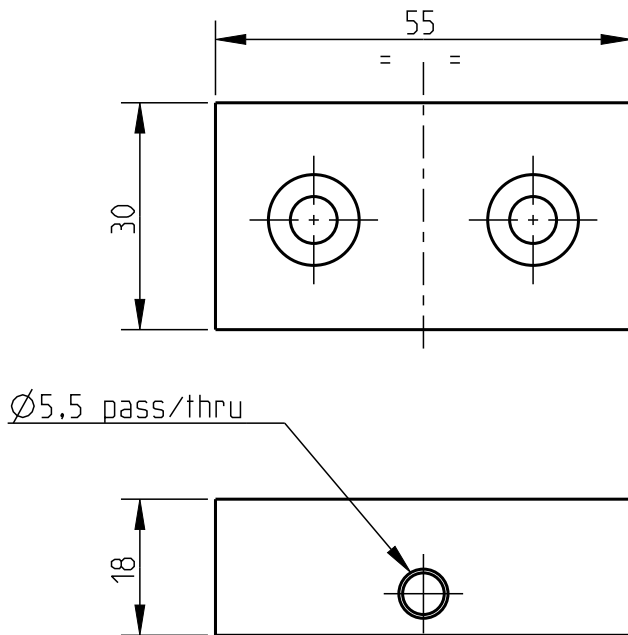
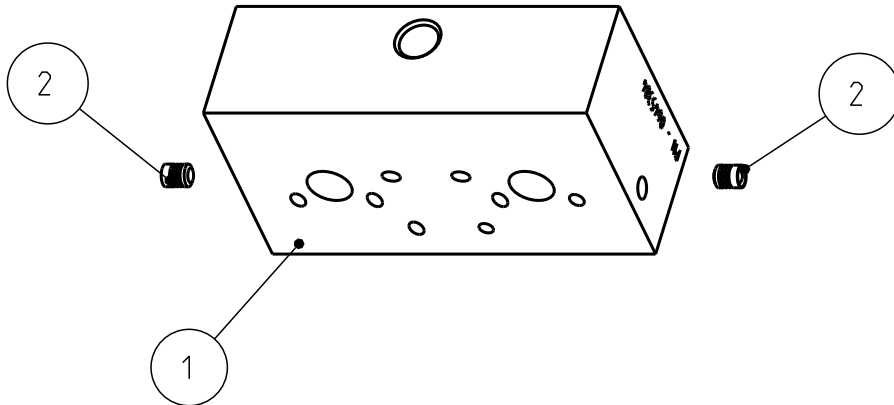



Pos.	Q.tà <i>Q.ty</i>	Codice <i>Items</i>	Descrizione	Description					
1	1	0645302	nPz-CORPO FINALE	nPz FINAL BODY					
2	2	3001222	SPINA KOENIG EXPANDER 3-INOX	PIN-KOENIG EXPANDER 3-INOX					pietro.masciave



Togliere bave e spigoli vivi / Remove burrs and sharp edges.

 MILANO - ITALY	DESCRIZIONE / DESCRIPTION		nPz - ELEMENTO FINALE nPz - END ELEMENT		SCALA SCALE		1:1		✓(✓✓✓✓)	
	CODICE PART N.	0645384	REV. REL.	2	DISegnato/DRAWN BY	CONTROLLATO/CHECKED	DATA DATE	17.10.22	DATA DATE	08.11.22
MATERIALE MATERIAL				FIRMA / SIGN		FIRMA / SIGN		SMUSSI NON QUOTATI ROUND EDGE NOT DIMENSIONED		
FINITURA / FINISHING				pietro.masciave		mdelconte		TOLLERANZE GENERALI / GENERAL TOLERANCE		
TRATTAMENTO TERMICO / HEAT TREATMENT				N. PROTOCOLLO PROTOCOL N		268366		QUOTE / DIMENSIONS - UNI 22768-1: GEOMETRIA / GEOMETRY - UNI 22768-2: k		
				RICAVATO DA: / OBTAINED FROM:		PESO NETTO Kg. NET WEIGHT Kg.		PESO LORDO Kg. WEIGHT Kg.		
				/		0.071		COD. MATERIALE/MATERIAL CODE		
				/				