

FEATURES

- Flow rate: 120 g/min
- Max. operating pressure: 180 Bar
- Lubricant: NLGI 0 - 2 grease
- Crank-operated piston pump system
- Electric motor
- Suitable for drums: 15 – 20 Kg

THE IDEAL ELECTRIC DRUM PUMP FOR PROGRESSIVE AND DOUBLE LINE LUBRICATION SYSTEMS

The **Mini Cannon** is designed to meet the demands of applications that require the use of conventional drum pumps but in environments that do not use compressed air.

The pump operates by means of an electric motor that provides flow and pressure at high levels.



The lifting handle makes it easy to manoeuvre the pump when changing grease drums.

Vip5 Controller

High performance system designed to control most small and medium-sized lubrication systems.

The Vip5 Controller can be used to build a progressive lubrication system using the **Mini Cannon**.

It allows easy configuration of the system's operating, control and command parameters.



VIP5 CODE
1639141

APPLICATIONS

- PROGRESSIVE AND DOUBLE LINE SYSTEMS
- APPLICATIONS WHERE NO COMPRESSED AIR IS AVAILABLE
- LUBRICANT FILLING APPLICATIONS

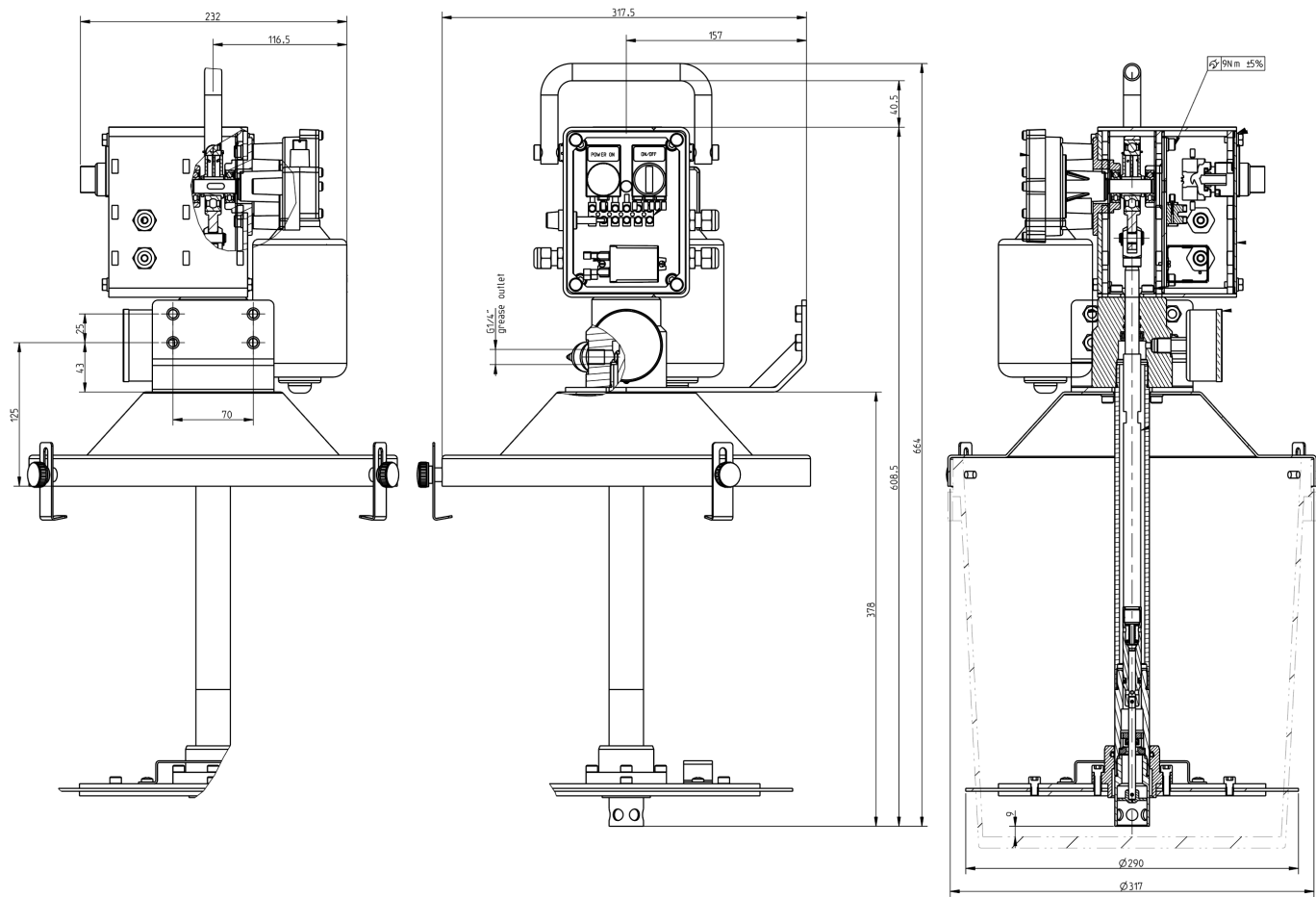
TECHNICAL INFORMATION

GENERAL TECHNICAL CHARACTERISTICS	
Drum capacity	15 Kg / 20 Kg
Grease viscosity	Max NLGI 2
Flow rate	120 g/min
Max. pressure	180 Bar
Maximum pressure switch	Pre-set 180 Bar
Temperature of use	-5 to +60
Electric motor	24 VDC
Maximum current	10 A
Degree of motor protection	IP 54

Note: The grease supply is stopped via the maximum pressure switch when the maximum pressure of 180 Bar is reached.



DIMENSIONS (NOT TO SCALE)



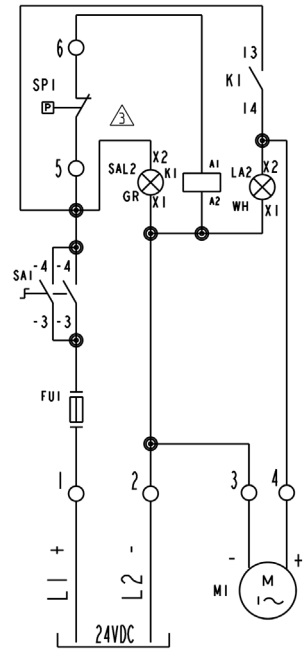
ORDER INFORMATION

CODE	DESCRIPTION
0234900	Electric drum pump 15/20 Kg – 24V

SPARE PARTS

CODE	DESCRIPTION
0234928	Cover
0234931	Follower plate disc
3023120	Knob

WIRING DIAGRAM



Distributor Info: