

Characteristics

- SAE Metric – BSP – NPTF threads available
- Operates up to 500 bar (7.200 PSI)
- Operates with Oil or Grease
- All the component are nickel-plated, high resistance to corrosion
- Marking CE
- Marking ATEX
- The bases are always supplied complete with standard 'O' rings and fixing screws
- The two outputs are combined by replacing the adapter. Just take one item of stock
- Air bleed valves built into base
- Secure and controlled lubrication
- Assembling simple and flexible with low maintenance costs
- Ability to replace the dose without detaching the pipes

Modular progressive distributors SMO-SMX

Metering elements for the exact breakdown of oils and grease

The modular system consists of two main components: the base and the metering elements.

The modular progressive distributor is available in two sizes:

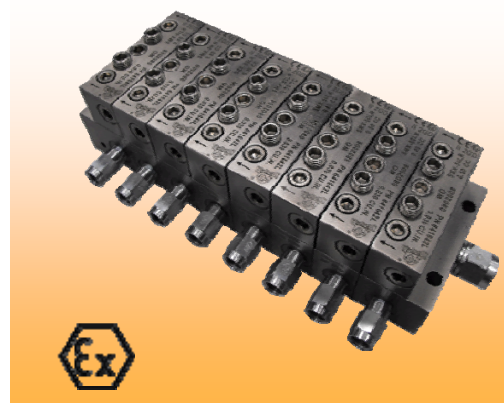
“SMO miniature” and “SMX standard”.

Conventional bridging pieces are eliminated. Bridging elements have been introduced and these interconnect and discharge to the adjacent element.

The distributor assembly principle enables factory floor distributor assembly to accommodate grouping of lubrication points.

The base assembly can be mounted and piped up without the metering elements. This provides the most advantageous routing of pipe work and the elements can then be fitted to suit.

The system can be easily extended and the modular concept provides low cost replacement of component.



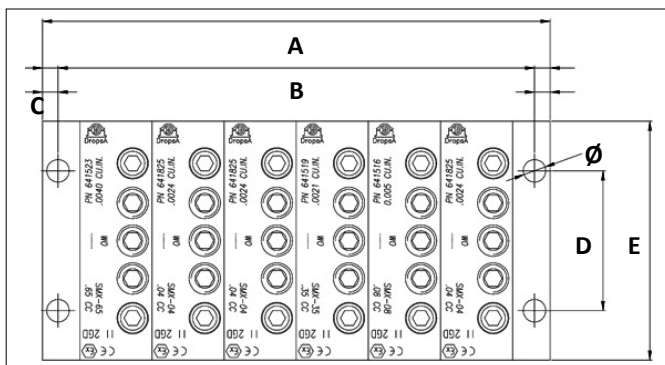
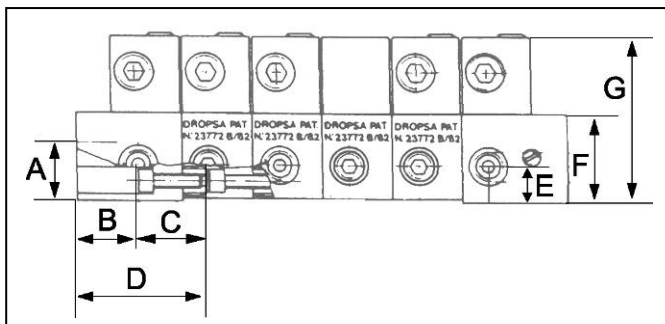
SMX METERING ELEMENTS (*)							
DELIVERY PER OUTLET		1 OR 2 OUTLETS		DELIVERY PER OUTLET		1 OR 2 OUTLETS	
CC.	CU. IN.	Symbol	Part No.	CC.	CU. IN.	Symbol	Part No.
0,04	0.0024	SMX 04	641825	0,40	0.025	SMX 40	641520
0,08	0.005	SMX 08	641516	0,50	0.030	SMX 50	641521
0,16	0.010	SMX 16	641517	0,60	0.036	SMX 60	641522
0,25	0.015	SMX 25	641518	0,65	0.040	SMX 65	641523
0,35	0.021	SMX 35	641519	0,00	0.000	BY PASS X	641514

(*)Approved according to Automotive

SMX METERING ELEMENTS			
DELIVERY PER OUTLET		1 OR 2 OUTLETS	
CC.	CU. IN.	Symbol	Part No.
0,04	0.0024	SMO 04	641720
0,08	0.005	SMO 08	641716
0,16	0.010	SMO 16	641717
0,25	0.015	SMO 25	641718
0,00	0.000	BY PASS 0	641714

Advantages

- Conventional tie rods are eliminated. There is no maximum limitation on the number of elements which can be used on the assembly.
- Auxiliary by-pass elements can be installed in the assembly to accommodate an increase or decrease in points without disturbing the base assembly or pipework
- Lubricant volume can be easily increased or decreased during system commissioning or service without disturbing the base assembly or pipework



DIMENSIONS SM0 - SMX								
Type	A		B		C		D	
	mm	in	mm	in	mm	in	mm	in
SM0	18.5	0.72	16	0.62	20.60	0.80	30	1.17
SMX	20	0.78	20.2	0.78	23.42	0.91	35	1.36
	E		F		G			
	mm	in	mm	in	mm	in		
SM0	12.5	0.72	30	1.17	50	1.9		
SMX	12.5	0.72	30	1.17	56	2.2		

DIMENSIONS SM0 - SMX							
Type	C		D		E		Ø
	mm	in.	mm	in.	mm	in.	
SM0	4,2	0.16	42	1.63	68	2.6	6
SMX	5,0	2	44,45	1.73	76	2.9	7.2

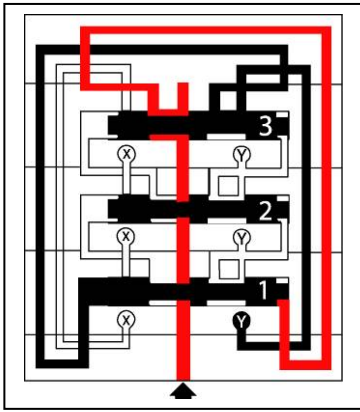
Applications

- Any oil and grease lubrication system for
- Machine tools
- Textiles
- Heavy industry

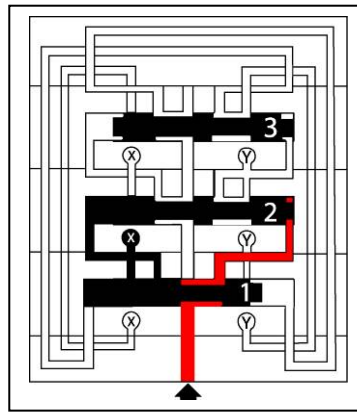
DIMENSIONS SM0 - SMX								
Type	SM0				SMX			
	A		B		A		B	
No. Elements	mm	in	mm	in	mm	in	mm	in
3	80,4	3,17	72,40	2,85	93,02	3,66	83,22	3,276
4	101,2	3,98	93,20	3,67	116,44	4,58	106,44	4,190
5	122	4,80	114,00	4,49	139,86	5,51	129,86	5,112
6	142,8	5,62	134,80	5,31	163,28	6,43	153,28	6,034
7	163,6	6,44	155,60	6,13	186,70	7,35	176,70	6,956
8	184,4	7,26	176,40	6,94	210,11	8,27	200,11	7,879
9	205,2	8,08	197,20	7,76	233,53	9,19	223,53	8,801
10	226	8,90	218,00	8,58	256,95	10,12	246,95	9,723
11	246,8	9,72	238,80	9,40	280,37	11,04	270,37	10,645
12	267,6	10,54	259,60	10,22	303,79	11,96	293,79	11,567
13	288,4	11,35	280,40	11,04	327,21	12,88	317,21	12,489
14	309,2	12,17	301,20	11,86	350,63	13,80	340,63	13,411
15	330	12,99	322,00	12,68	374,05	14,73	364,05	14,333
16	350,8	13,81	342,80	13,50	397,47	15,65	387,47	15,255
17	371,6	14,63	363,60	14,31	420,89	16,57	410,89	16,177
18	392,4	15,45	384,40	15,13	444,30	17,49	434,30	17,099
19	413,2	16,27	405,20	15,95	467,72	18,41	457,72	18,021
20	434	17,09	426,00	16,77	491,14	19,34	481,14	18,943

Principles of operation

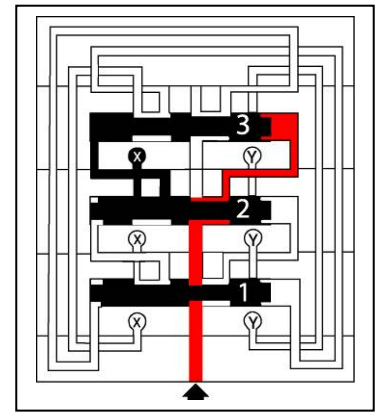
1. The flow of lubricant reaches all the elements and pushes all the metering pistons towards the right



2. Successively, the flow pushes on the right side of the first piston



3. The first piston, having moved to the left inverts the direction of the flow so that all the other pistons are moved to the left



The continuing flow pushes the first piston towards the right, changing the system to the conditions in Fig.1. The progressive movement of the pistons discharges from the outlets X and Y the lubricant accumulated in the previous sequence.

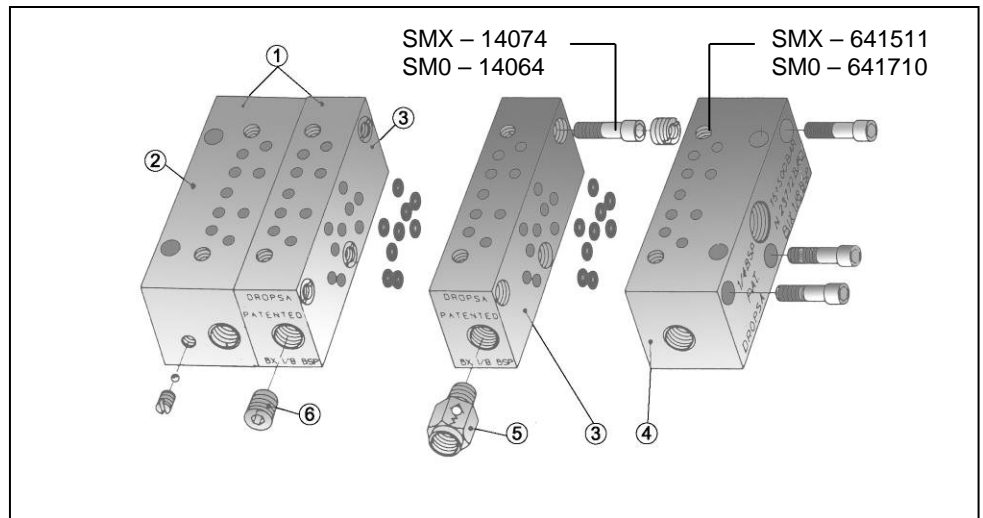
The base

The base is made up of a minimum of three segments:

- Inlet base
- Intermediate base
- End Base

And can be increased in unlimited number by addition of intermediate sections.

This revolutionary system makes the assembly easy and flexible; there is no need to determine in advance the size of the base, just add on distributors in unlimited number by means of very simple threaded inserts supplied for the assembly (Patented).



This simple technique allows the system to operate even at very high pressure without any leakage in the assembly.

There is also the possibility of ordering with one part number only, the end base + the intermediate base already assembled.

Simply add on the inlet base and you have a three base assembly.

With just 3 screws!

Ref.	Description	SMO			SMX			SYMBOLO
		1/8 BSP	1/8 NPTF		1/4 BSP	1/4 NPTF	7/16-20 UNF	
	Inlet Thread	1/8 BSP	1/8 NPTF		1/4 BSP	1/4 NPTF	7/16-20 UNF	
	Outlet Thread	1/8 BSP	1/8 NPTF		1/8 BSP	1/8 NPTF	7/16-20 UNF	
1	End Base + intermediate base	641792	643569		641561	643568	642028	
2	End Base	641713	643564	BFO	641515	643561	643802	BFX
3	Intermediate base	641712	643563	BO	641513	643542	643801	BX
4	Inlet base	641711	643562	BIO	641512	643541	643800	BIX
5	Check Valve	92335	641564		92335	641564	642029	
6	Plug	3232098	3232095		3232098	3232095	642031	

Contacts

www.dropsa.com
sales@dropsa.com

ITALIA

Dropsa SpA
 t. +39 02-250791
 f. +39 02-25079767

U.K.

Dropsa (UK) Ltd
 t. +44 (0)1784-431177
 f. +44 (0)1784-438598

GERMANY

Dropsa GmbH
 t. +49 (0)211-394-011
 f. +49 (0)211-394-013

FRANCE

Dropsa Ame
 t. +33 (0)1-3993-0033
 f. +33 (0)1-3986-2636

ESPAÑA

Polydrop, S.A.
 t. +34 (0)93-260-22-50
 f. +34 (0)93-260-22-51

U.S.A.

Dropsa Corporation
 t. +1 586-566-1540
 f. +1 586-566-1541

AUSTRALIA

Dropsa Australia Ltd.
 t. +61 (0)2-9938-600644
 f. +61 (0)2-9938-6611

BRAZIL

Dropsa
 t. +55 (0)11-563-10007
 f. +55 (0)11-563-19408

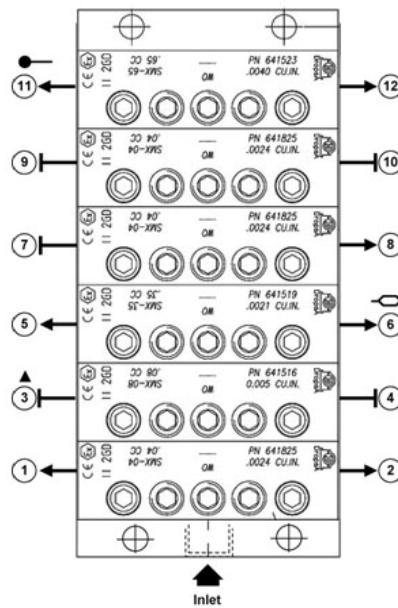
CHINA

Dropsa Lubrication
 Systems (Shanghai)
 Co.,Ltd
 t. +86 (021) 67740275
 f. +86 (021) 67740205

Order Example

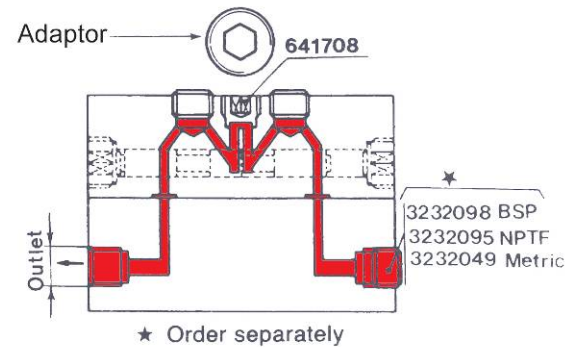
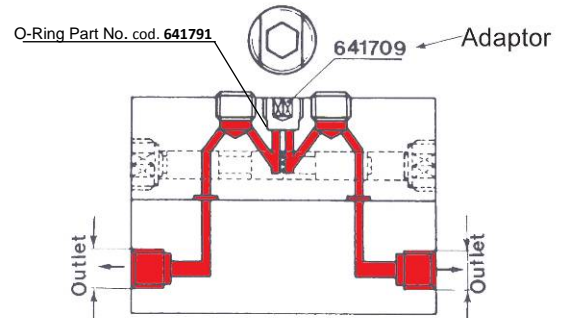
SM0 – 6 (MO8 – M16LR – M25CC – M08D – M25R – M25C)

Note: the assembly is seen vertically and the outlets are in sequence; starting from the bottom (inlet) from left to right. Symbol 'LR' refers to bridge elements.



Single and double outlet conversion

It is possible to double the delivery of a single element by replacing the Yellow Adapter Part. No. 641709 with the White adapter Part. No. 641708 as shown in the drawing. When converted into single, plug off the second outlet.



How to Order

